

# 650 California Street

## WiredScore Fact Sheet



Certification

**WiredScore**

Expiration date

**July 2, 2026**

Building size

**470000 sqft**

Building address

**650 California Street, San Francisco,  
California, 94108, United States**

### 650 California Street is a WiredScore Silver building





Being a WiredScore Silver building means that 650 California Street has been designed with the connectivity needs of occupiers in mind. Fiber connectivity is available nearby which allows occupiers to access high-speed internet. Robust infrastructure will ensure connectivity is protected and secure.



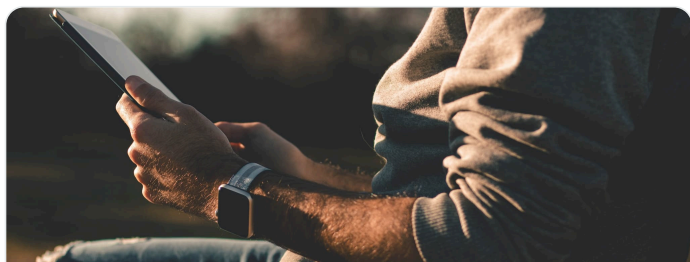
**WiredScore**  
**SILVER**

1 of 15 WiredScore buildings in San Francisco

## An overview of the experience at 650 California Street

Category	Your experience at 650 California Street	Regular building experience
 Mobile and Internet	Enjoy excellent connectivity throughout the building, powered by high-quality fiber infrastructure.	Expect frustrating interruptions and dead zones as you move throughout the building due to patchy digital connectivity.
 Set-up	Setting up internet access is effortless for you with multiple high-speed internet providers to choose from, giving you the flexibility to select the provider that best meets your needs, ensuring you can get online quickly and without hassle.	Experience a tedious and slow process to setup your internet connection.
 Future-ready	To ensure that your needs are met both now and in the future, the building is equipped with spare capacity in the telecommunications room. This ensures the building can accommodate new and emerging technologies, providing you with the flexibility and adaptability you require.	Risk future problems arising from an internet connection and mobile connectivity that can't keep up with your growing needs.
 Resiliency	You can rely on consistent connectivity as the building features a secure riser and telecommunications room, minimizing the risk of internet outages.	Experience frequent productivity loss and general frustration resulting from your vulnerable, and poorly secured internet infrastructure.

## Connected building highlights at 650 California Street



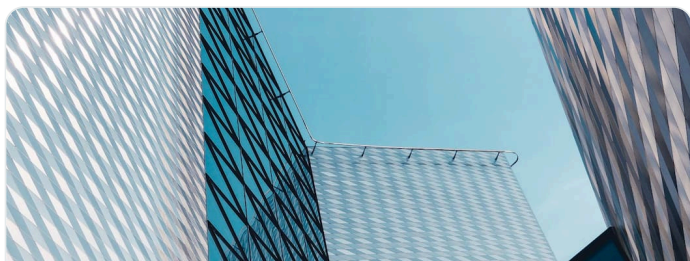
### Mobile and Internet

- Exercise the power of choice with multiple high-speed providers to choose from.
- Free Wi-Fi in amenity areas allows you to be connected throughout the building.
- Strong Wi-Fi performance with minimum speeds of 10Mbps throughout the building.
- Easily install fixed wireless, satellite and mobile equipment with dedicated space and cable pathways to risers on the rooftop.



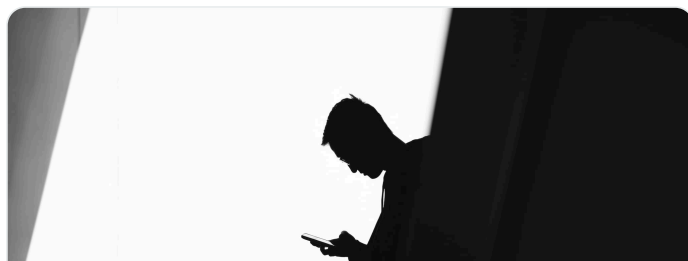
### Set-up

- Install times are minimized with ISP connection points present across the floors of the building.
- Easier service installation enabled by spare capacity within the below-ground telecommunications cable pathway.
- Secure access to risers on each floor prevents unauthorized access and accelerates the installation of connectivity services.
- Protected routing enabled by a top-to-bottom riser expedites the installation process.
- Capacity in risers enables fast installations of new connectivity services.



### Future-ready

- New internet service providers can be installed quickly with available space in the telecommunications room.
- Signed ISP agreements are available to streamline new connections.
- Standardized ISP agreements are available to streamline new connections.
- A dedicated fiber backbone eases telecommunications installations.



### Resiliency

- Your connection is safeguarded by a secure and dedicated telecommunications room.
- A climate controlled telecommunication room protects your equipment from overheating and condensation.
- Connectivity infrastructure in the telecommunications room is protected from flooding and leaks.
- An audit of the telecommunications installation verifies best practices are followed.

## What are the Internet service providers (ISP) within the building?

Name of provider	Provider type	Intake	Location	Riser	Full distribution
AT&T	Fiber - Primary	POE #1 - California Street	Main Telephone Room - B2 Level	Riser #1 - Mechanical Room Riser	Yes
AT&T Small Business	Low-cost	POE #1 - California Street	Main Telephone Room - B2 Level	Riser #1 - Mechanical Room Riser	Yes
Lumen	Fiber - Primary	POE #1 - California Street	Main Telephone Room - B2 Level	Riser #1 - Mechanical Room Riser	Yes

## What are the Mobile operators within the building?

Name of provider	Performance	Source	Additional areas covered	5G ready
AT&T Mobility	Good	In-building solution	Yes	Yes

## What is WiredScore?

WiredScore certification is the global standard for digital connectivity, recognizing and promoting best-in-class digitally connected buildings across the globe. Being certified by WiredScore demonstrates the building has gone through rigorous 3rd party verification.

**4000+**

certified buildings

**8m+**

people in WiredScore certified buildings

**800m+**

certified square feet

**160+**

cities across the globe